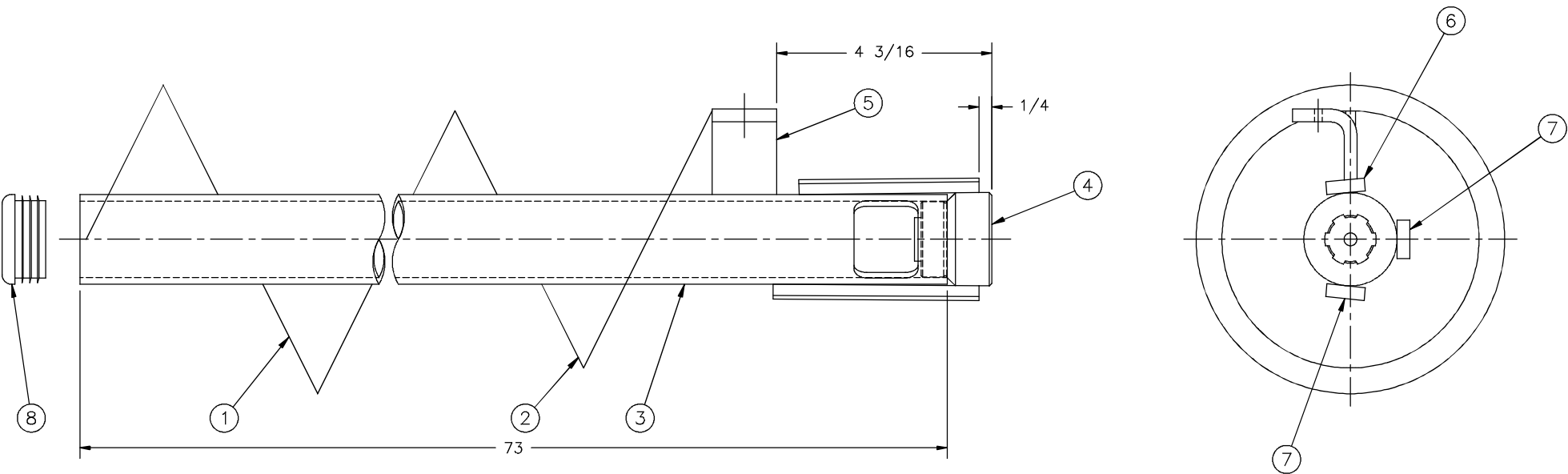


This drawing contains confidential proprietary information of Triple C, Inc. and is subject to return upon request. The furnishing of this drawing is not to be construed as the grant of any license, express or implied, to manufacture, have manufactured, use or sell the structures shown hereon.



THIS AUGER ASSEMBLY IS USED ON HYDRA FEEDERS WITH SENSOR AND MAGNET. THIS ASSEMBLY IS NOT USED WITH MOTOR/SENSOR COMBINATION.

					TRIPLE C, INC. P.O. BOX 248, SABETHA, KS 66534 (785) 284-3674 FAX (785) 284-3931			
8	RT-14 CAP			1	MATERIAL: NOTED			
7	FI 1/4x3/4		4	2				
6	FI 1/4x3/4		3-1/2	1	DWG PATH: \DWG\HF			
5	HF12-31			1				
4	HF12-32B			1	DO NOT SCALE DRAWING			
3	HF12-32A		(73)	1				
2	5x5x1-25/32x10 GA LH		60	1	TOLERANCES (unless otherwise specified)			
1	6x6x1-25/32x3/16 LH		8-1/2	1				
					TITLE:			
					AUGER ASSEMBLY			
ITEM MATERIAL LENGTH QTY					DRAWING NUMBER: HF12-33 B			